

OpenAIRE RDM costings tool & infographic

Ryan O'Connor

Research Data Specialist

Digital Curation Centre, University of Edinburgh

ryan.oconnor@ed.ac.uk

What's ahead today

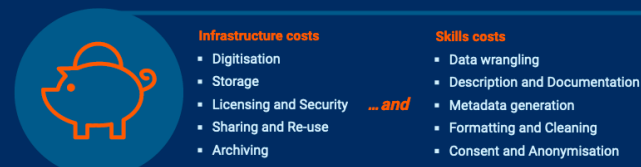
- Introduction to and background of RDM costs infographic
- How this resource ties into the OpenAIRE costings tool
- Overview of the three sections of the infographic
- Editable template of infographic
- Questions?

About the Digital Curation Centre

- Established in 2004
- Consortium based at University of Edinburgh and University of Glasgow
- Working at national and international levels
- Involved in many international consortia, projects, events, and schools
- DMPonline tool for data management plans
- Specialise in training, consultancy, policy making and advocacy in digital data management best practice and services provision
- (We do not curate any data ourselves!)

What will it cost to manage and share my data?

What to cost in?



A Data Management Plan (DMP) can help to identify activities and potential costs at the outset of your project. Identifying RDM costs before you begin the project ensures that you will be able to request adequate funds to support good data management and enable data sharing.

Things to consider...

- Eligible costs:** When applying for funding, remember that there are typically two types of eligible costs; 'Direct costs', usually referring to staff time, travel, equipment, etc., and 'Indirect costs', generally covering things like administrative and financial management.
- Avoid 'double dipping':** Most funders will cover justifiable costs related to RDM. However, if something is covered by indirect costs (e.g. institutional storage) you can't also claim it as a direct cost. Check with your institution on how best to include these in grant proposals.

Useful costing guides:

- OpenAIRE: How to identify and assess Research Data Management (RDM) costs
- LCRDM: Guide Research Data Management and Costs
- Horizon 2020 Costing Guide
- UK Data Service: Data management costing tool and checklist

Who can help you to estimate costs?



How much could management & deposit cost?

Some factors that affect RDM costs...

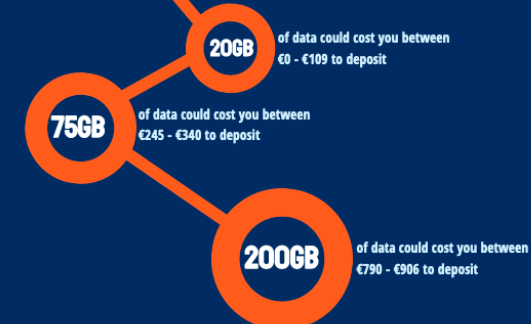


Remember: Different repositories apply different charging models. Some apply a fixed-fee per data package plus an amount over a certain volume, while others only apply variable fees depending on the data volume. Some may not charge at all.

For example fees see:

- University of Cambridge repository fees
- Dryad data publishing charges

Based on these examples, we have performed some comparative calculations. The cheapest repository changes at different points so shop around!



What will it cost to manage and share my data?

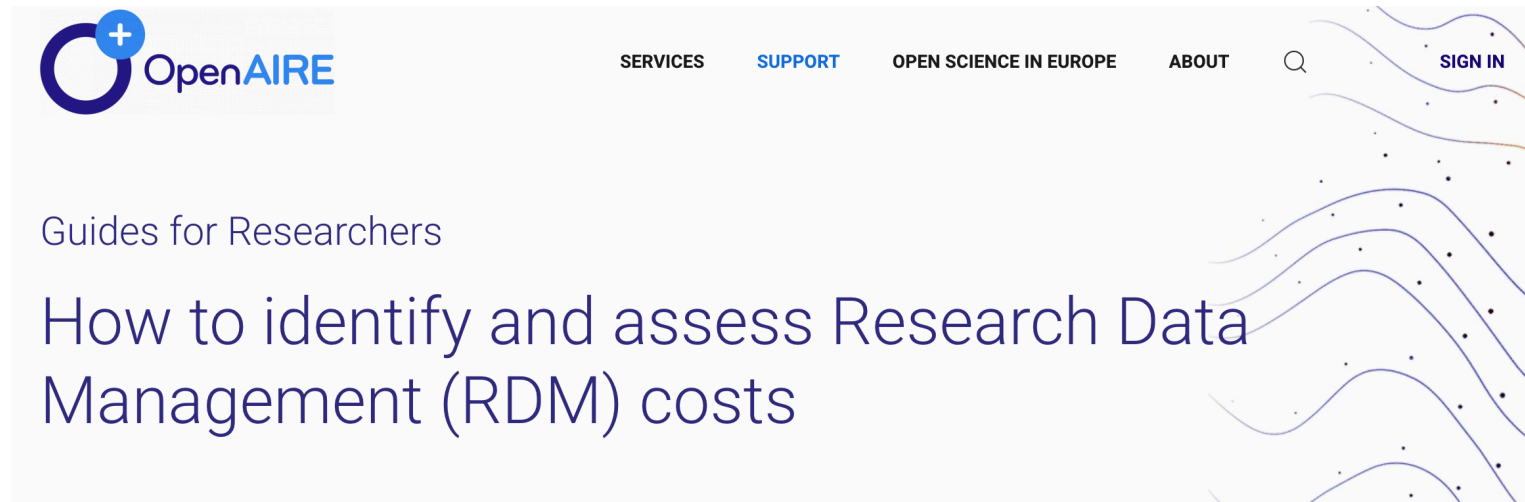
Infographic background

- Work carried out as part of OpenAIRE Advance **Research Data Management Taskforce**
- Original idea came from discussions with other members of the Taskforce, which identified the need for something to help **communicate with researchers about RDM costs**
- Decision to create something more visual to complement the the existing **OpenAIRE costings guide** (more on this next...)
- In developing this, we drew on the material and discussions which took place at the **DCC's Research Data Management Forum** (RDMF19) event back in September 2019 on Costing Data Management: <https://tinyurl.com/bqssgycy>



OpenAIRE costings tool

- Developed to help researchers and support staff comply with **H2020 Open Research Data pilot** requirements
- Based on **UK Data Service's** Data Management Costing Tool & **LCRDM** Guide for Research Data Management and Costs
- Tool outlines different RDM activities and potential associated costs, ordered by phase of project lifecycle, e.g.,
 - Transcription at the Data Collection stage and the potential costs for this
 - File Format conversion at the Data Preservation & Archiving stage and its potential costs
- Find on openaire.eu → Support → Guides → Research Data Management costs in H2020 projects



'What to cost in?'

- Sketches out **infrastructure** and **skills** costs - another way to look at these is maybe 'hard' and 'soft' costs
- Highlighting of **Data Management Plan (DMP)**:
 - Importance of a DMP submission as part of H2020 funding applications.
 - Where direct costs are covered they will have been incurred during the duration of the project - in this sense a DMP is vital for addressing a project's needs in advance and considering the specific costs that may be associated with these needs.
- **Eligible** and **ineligible** costs under H2020 grants
- As well as the **H2020 costing guide**, in this section there are links to a few others at the end of the section

What will it cost to manage and share my data?

✓ What to cost in?



Infrastructure costs

- Digitisation
- Storage
- Licensing and Security
- Sharing and Re-use
- Archiving

... and

Skills costs

- Data wrangling
- Description and Documentation
- Metadata generation
- Formatting and Cleaning
- Consent and Anonymisation



A Data Management Plan (DMP) can help to identify activities and potential costs at the outset of your project. Identifying RDM costs before you begin the project ensures that you will be able to request adequate funds to support good data management and enable data sharing.

Things to consider...

- **Eligible costs:** When applying for funding, remember that there are typically two types of eligible costs; 'Direct costs', usually referring to staff time, travel, equipment, etc., and 'Indirect costs', generally covering things like administrative and financial management.
- **Avoid 'double dipping':** Most funders will cover justifiable costs related to RDM. However, if something is covered by indirect costs (e.g. institutional storage) you can't also claim it as a direct cost. Check with your institution on how best to include these in grant proposals.



Useful costing guides:

- OpenAIRE: [How to identify and assess Research Data Management \(RDM\) costs](#)
- LCRDM: [Guide Research Data Management and Costs](#)
- Horizon 2020 [Costing Guide](#)
- UK Data Service: [Data management costing tool and checklist](#)



'Who can help you to estimate costs?'



- Outline of the **various stakeholders** who may be able to assist researchers to understand and estimate the costs associated with their project
- Not every stakeholder will be of relevance to every researcher or project
- Idea was to show that there are many areas where researchers can seek advice, all of which are connected.
- It may also help to image the **researcher in the centre** of the circle here.

'How much could management & deposit cost?'

- Example factors flagged here again will not apply to all researchers, but these some of the more **common types of cost drivers** that researchers face
- In identifying some **example costs for repository storage**, we looked at Uni of Cambridge and the Dryad repositories.
- Costs will change over time but on balance we wanted to include something that put figure in front of researchers.

✓ How much could management & deposit cost?

Some factors that affect RDM costs...



Security of potentially sensitive data



Dataset size



Length of preservation required



Remember:

Different repositories apply different charging models. Some apply a fixed-fee per data package plus an amount over a certain volume, while others only apply variable fees depending on the data volume. Some may not charge at all.

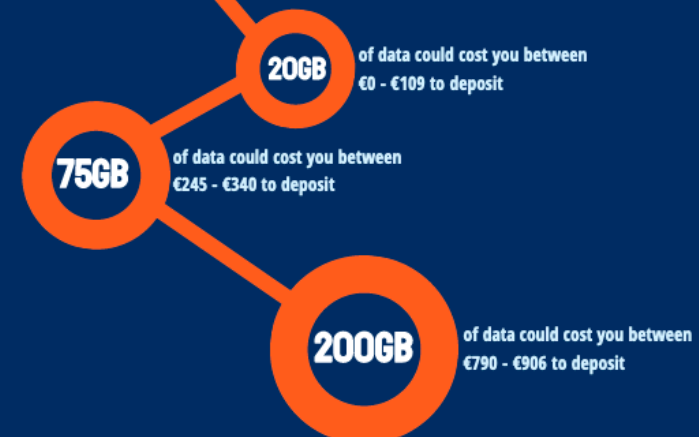


For example fees see:

- [University of Cambridge repository fees](#)
- [Dryad data publishing charges](#)

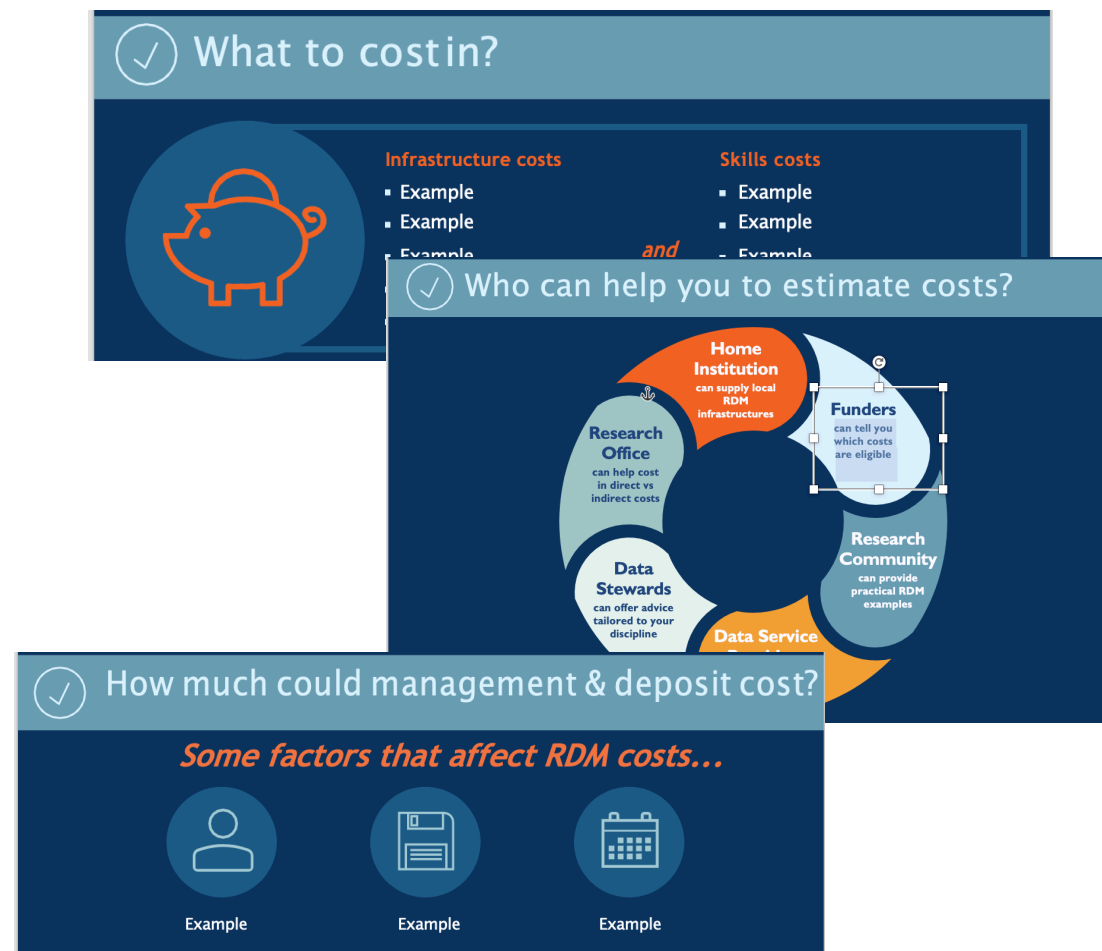


Based on these examples, we have performed some comparative calculations. The cheapest repository changes at different points so shop around!



Editable version of infographic

- Recently as part of a 'train the trainer' workshop for Social Sciences and Humanities Open Cloud (SSHOC), editable version of the infographic was developed
- The editable sections are:
 - Infrastructure and skills costs
 - The stakeholders in the 'Who can help you estimate costs?' section
 - The factors or drivers that affect RDM costs.
- Using the OpenAIRE costings tool, you can fill in editable sections if there are example costs, activities, stakeholders, or cost drivers more relevant in your context





How much could management & deposit cost?

Some factors that affect RDM costs...

- Security of potentially sensitive data
- Dataset size
- Length of preservation required

Remember: Different repositories apply different charging models. Some apply a fixed-fee per data package plus an amount over a certain volume, while others only apply variable fees depending on the data volume. Some may not charge at all.

For example fees are:

- University of Cambridge repository fee
- Dryad data publishing charges

Based on these examples, we have performed some comparative calculations. The cheapest repository charges at different points to shop around!

Scenario	Cost (£)
If data could cost you between £0 - £100 to deposit	2068
If data could cost you between £105 - £400 to deposit	7568
If data could cost you between £470 - £980 to deposit	20068

OpenAIRE is funded by the European Union under grant agreement No 771744.

More OpenAIRE Advanced Research Information available here: [https://openaire.eu/en/about-us](#)

Any questions?

Contact:
Ryan O'Connor
ryan.oconnor@ed.ac.uk
OR
info@dcc.co.uk